

## Schedule 1

### Item 1 Description of Agreement Area

#### A. External boundary description

The agreement area covers all the land and waters within the portions of Lot 5282 on PH1570 (Bingeringo Pastoral Holding) and Lot 3366 on PH1455 (Amphion Pastoral Holding) which fall within the external boundary of native title determination application QUD6230/98 Jangga People (QC98/10) as accepted for registration on 19 October 2004, being an area east of a line defined as:

Commencing at a point at Longitude 146.377306° East Latitude 21.643524° South, being a point on the eastern boundary of the QUD6230/98 Jangga People (QC98/10) Native Title Determination Application and extending generally northerly along that native title determination application boundary passing through the following coordinate points:

Longitude ° (East)	Latitude ° (South)
146.378377	21.627496
146.379490	21.600584
146.379805	21.583400
146.380110	21.566789
146.381661	21.549626
146.383170	21.534754
146.384103	21.517582
146.386272	21.500429
146.388440	21.483278
146.392654	21.464545
146.398009	21.442840
146.402292	21.427146
146.405504	21.413456
146.409778	21.397120
146.415594	21.382892
146.419426	21.373719
146.426208	21.362032
146.434731	21.348826
146.442332	21.338063
146.453336	21.328307
146.465473	21.318623
146.475547	21.309939

## Notes

### Data Reference and source

- Agreement boundary data compiled by National Native Title Tribunal.
- Amended native title determination application QUD6230/98 Jangga People (QC98/10) as accepted for registration on 19 October 2004.
- Cadastre data sourced from the Department of Natural Resources and Mines, Qld (March 2012).
- Rivers/Creeks where available are based on Casement data sourced from Department of Natural Resources and Mines, Qld (1 February, 2012) – *else* Topographic vector data is © Commonwealth of Australia (Geoscience Australia) 2003.
- State borders data sourced from Geoscience Australia (1998).
- Localities data is © Commonwealth of Australia (Geoscience Australia) 2001.

### Reference datum

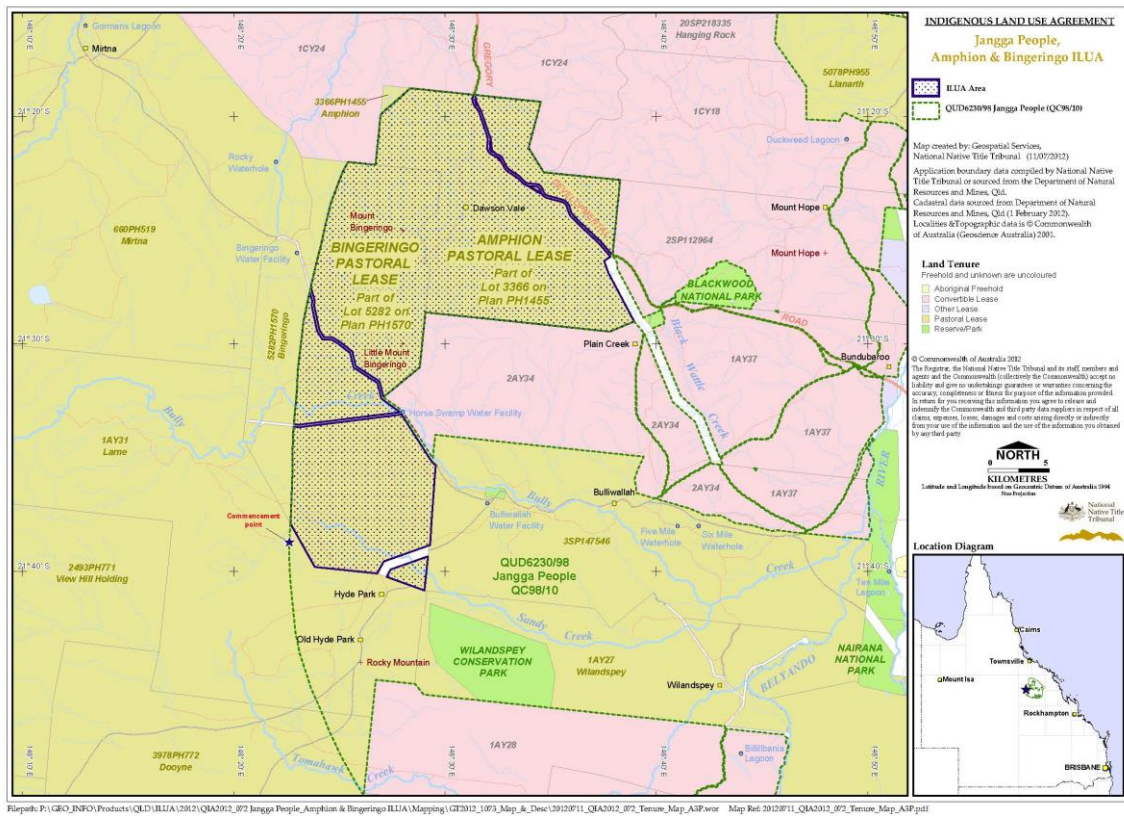
Geographical coordinates have been provided by the NNTT Geospatial Services and are referenced to the Geocentric Datum of Australia 1994 (GDA94), in decimal degrees and are based on the spatial reference data acquired from the various custodians at the time.

### Use of Coordinates

Where coordinates are used within the description to represent cadastral or topographical boundaries or the intersection with such, they are intended as a guide only. As an outcome to the custodians of cadastral and topographic data continuously recalculating the geographic position of their data based on improved survey and data maintenance procedures, it is not possible to accurately define such a position other than by detailed ground survey.

Prepared by Geospatial Services, National Native Title Tribunal (11 July 2012).

**B. Map**



**Item 3 Description of Lease**

Pastoral Holding 12/3366 comprising Lot 3366 on CP PH1455 commonly known as Amphion

Pastoral Holding 12/5282 comprising Lot 5282 on CP PH1492 commonly known as Bingeringo

**Item 4 Description of Lessee**

Neil Alan Angus, Narelle Gaye Angus and Luke Gregg Angus